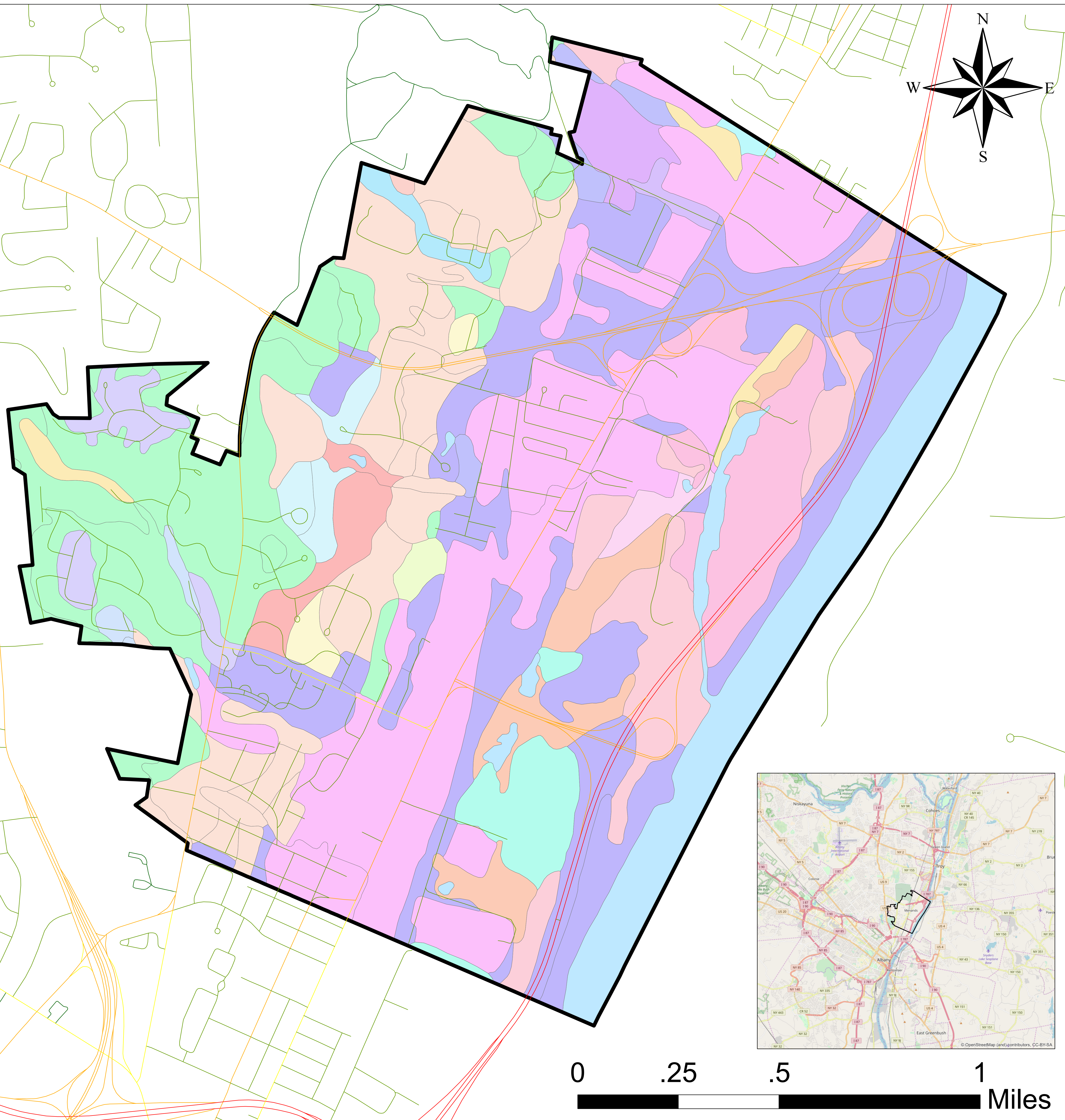
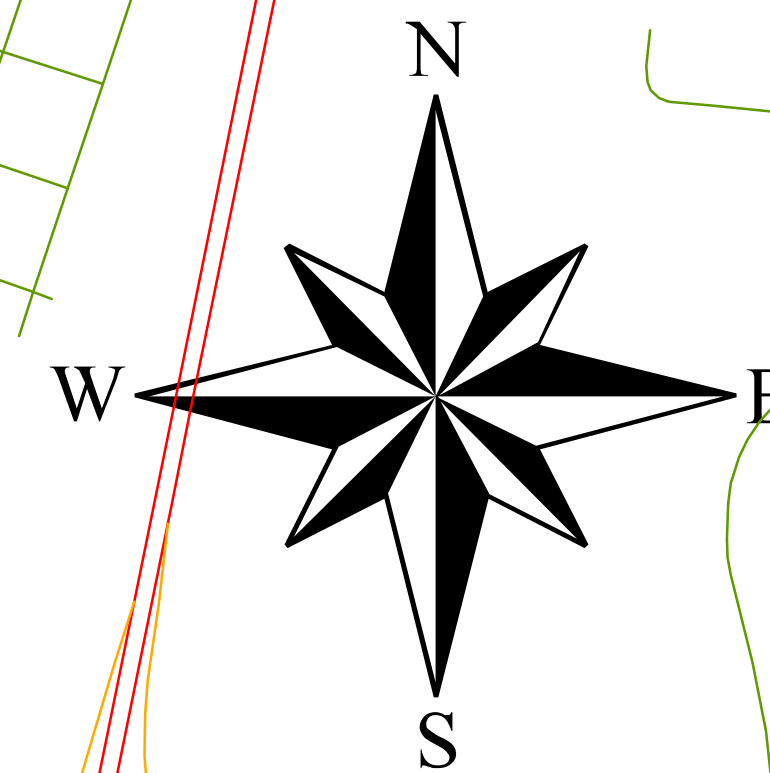


# Village of Menands Soil Classifications



## Soil Types

- Chenango gravelly silt loam
- Claverack loamy fine sand
- Colonie loamy fine sand
- Dumps
- Fluvaquents-Udifluvents complex, frequently flooded
- Hamlin silt loam
- Hornell silt loam, 3 to 8 percent slopes
- Howard gravelly silt loam, 0 to 3 percent slopes
- Hudson silt loam
- Madalin silt loam, 0 to 3 percent slopes
- Manlius channery silt loam
- Medihemists and Hydraquents, ponded
- Nassau channery silt loam
- Nunda silt loam
- Rhinebeck silty clay loam
- Scio silt loam, 3 to 8 percent slopes
- Stafford loamy fine sand
- Teel silt loam
- Udipsamments-Urban land complex
- Udorthents, loamy
- Unadilla silt loam, 8 to 15 percent slopes
- Urban Land
- Water
- Wayland soils complex substratum, frequently flooded

